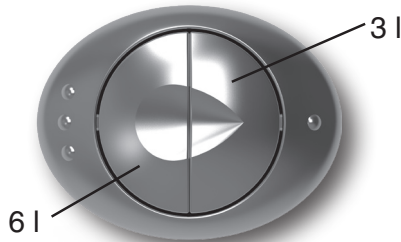
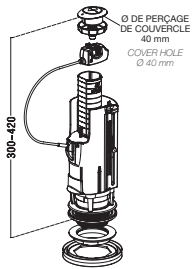


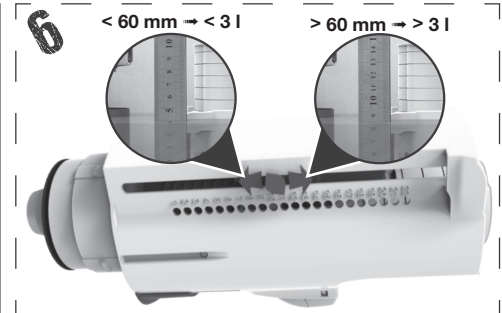
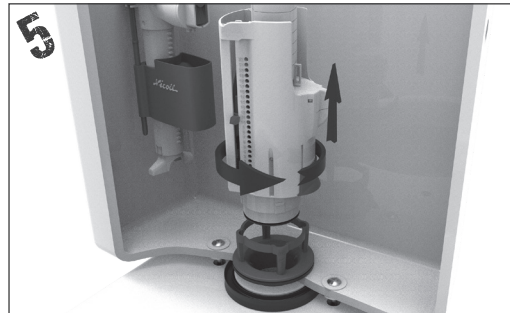
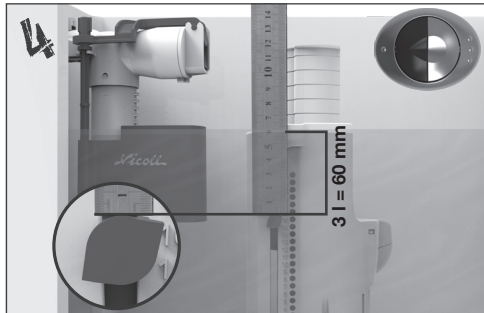
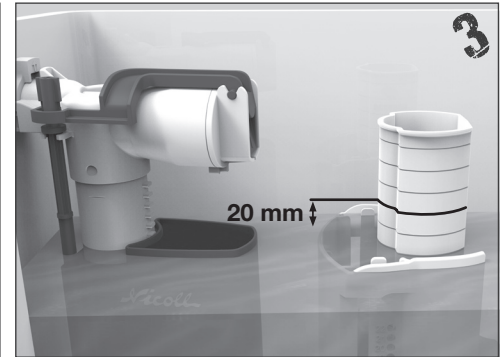
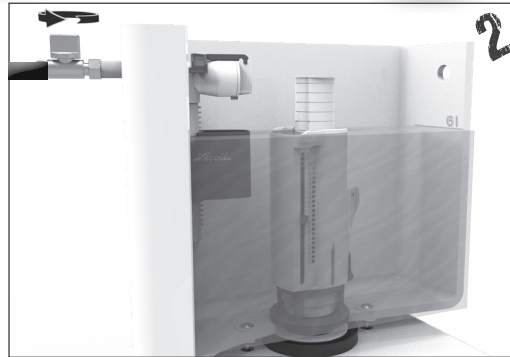
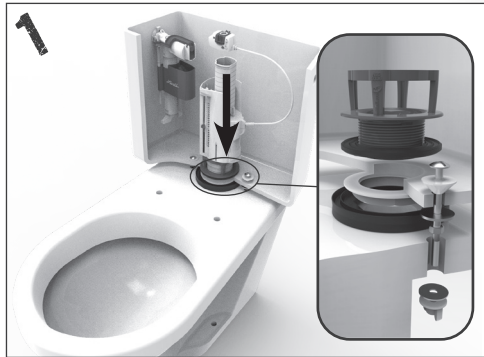
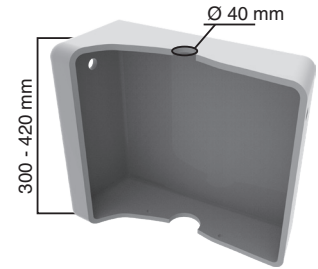
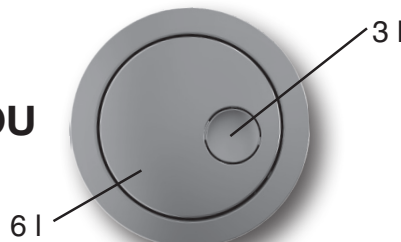


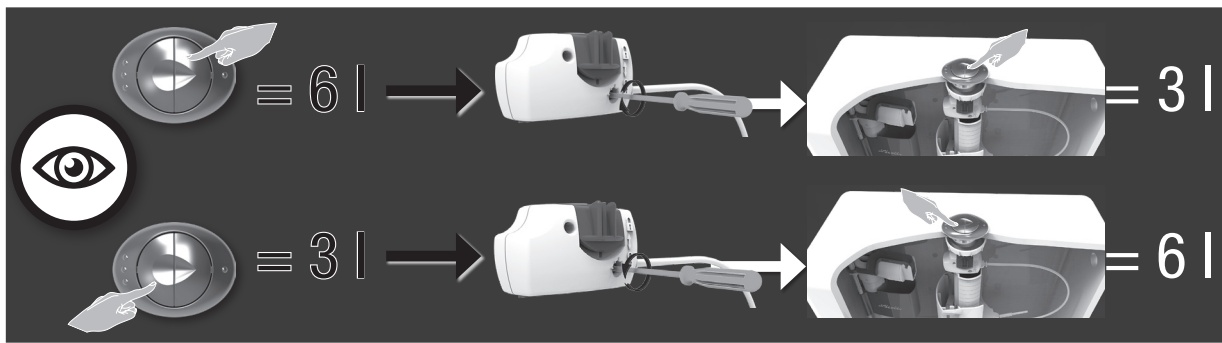
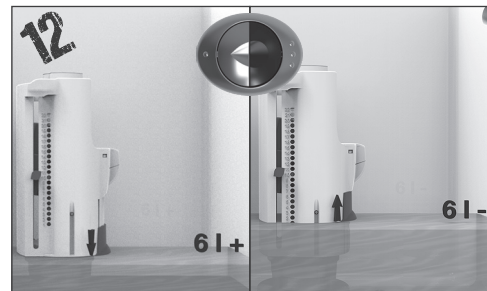
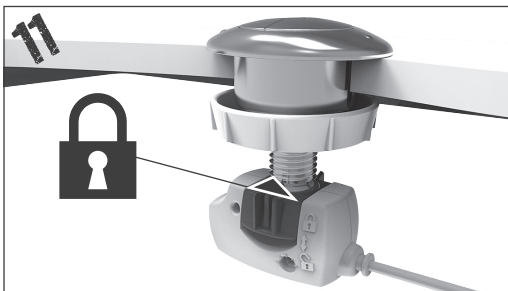
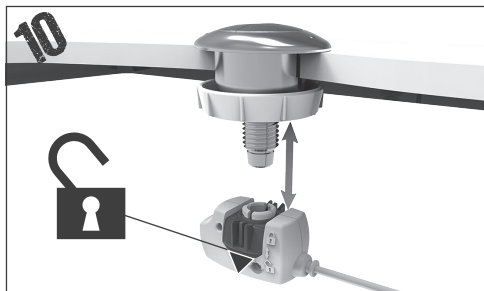
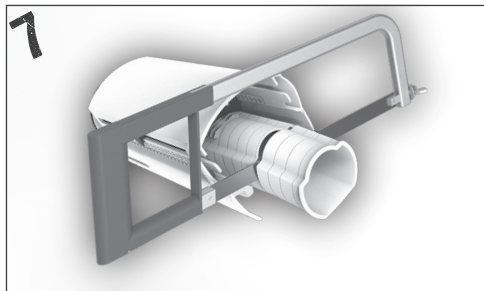
WC MÉCANISME DOUBLE VOLUME À CÂBLE // DOUBLE FLUSH WC MECHANISM

NOTICE DE POSE



OU





En présence de calcaire,
il est conseillé d'entretenir
le mécanisme au
vinaigre blanc
(couper l'arrivée d'eau et
sortir le mécanisme de sa
base par mouvement rotatif)