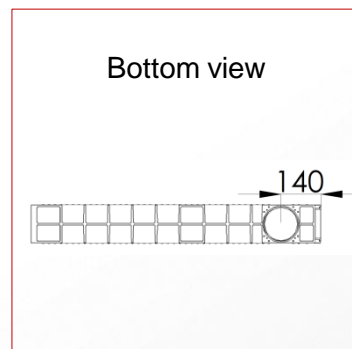
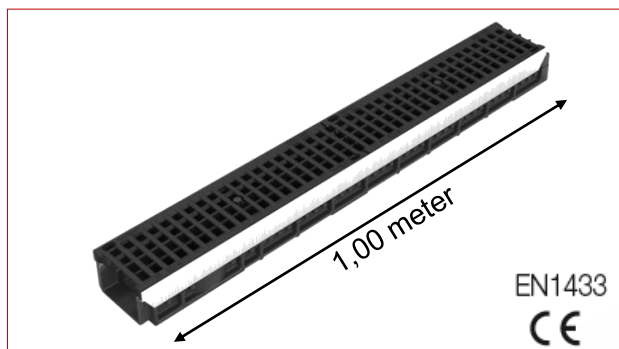
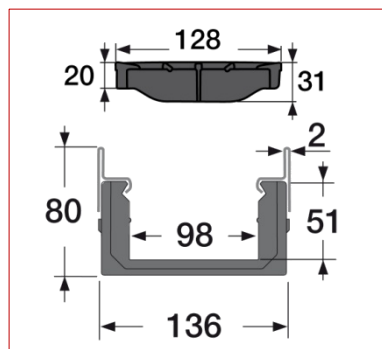
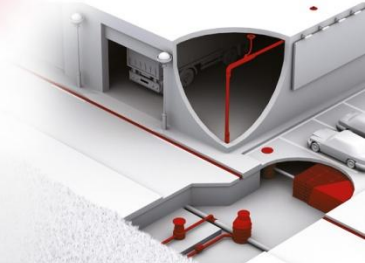


KENADRAIN I Channel PARK width 100 depth 0 with polyamide gratings class B125

Code : DR100BN



■ FUNCTION :

The drainage channel is designed to evacuation run-off water. In accordance with the EN1433 standard and the **CE** marking, it can be used in footways, pedestrian areas and comparable zones, private car parks or car parking decks in class **B125**.

■ DESCRIPTION :

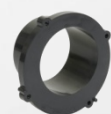
This drainage channel is one-meter-long. It consists of:

- a one-meter-long polypropylene body with a male/female interlocking joint system
- two black polyamide gratings fixed on the channel

■ ACCESSORIES :

The connection to the sewage can be achieved through the following PVC fittings:

- Ø 50 End cap & inlet-outlet cap – NJDR100
- Ø 100 Vertical outlet – STDR10
- Ø 110 Vertical outlet – SVDR10
- Ø 125 Vertical outlet – SXDR10
- Ø 110 or Ø125 sump units – PS100V or PS100X



STDR10
SVDR10
SXDR10



NJDR100



PS100V
PS100X

■ CHARACTERISTICS :

Resistance class: B125

Drainage surface: 411 cm²/ml

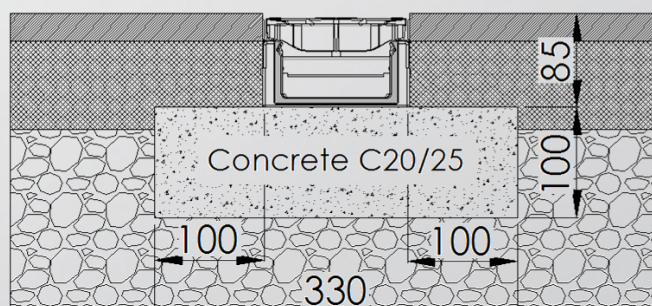
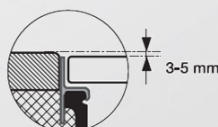
Opening dimension: maximum 15 x 17,6 mm

Hydraulic section: 47.5 cm²

Weight: 5.2 Kg

■ IMPLEMENTATION:

See the scheme opposite



■ QUALITY - ENVIRONMENT :

ISO 9001
ISO 14001
BUREAU VERITAS
Certification



DATE : December 2013