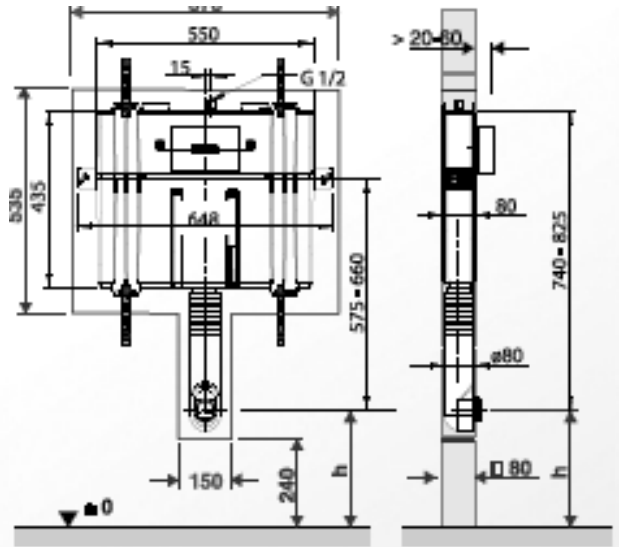
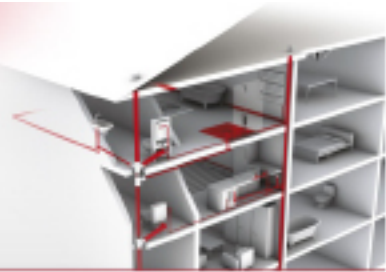


Toilets | CISTERN TO BE CONCEALED

Codes : RESADIS8



■ FUNCTION :

- Double volume cistern to be concealed in concrete for wall-hung WC

■ DESCRIPTION :

- Dual flush mechanism and Acoustic class I fill valve, factory setting of 6 and 3 liters, button function transmitted to INEO flush valve via flexible cables
- Adjustable flushing elbow
- Noise and condensation insulated shell

■ CHARACTERISTICS :

- Materials: Polystyrene cistern
- Dimensions: height 435 mm - width: 550 mm – depth: 80 mm
- Needed space : height: 535mm – width : 670mm

■ ACCESSORIES :

- 2-part angle valve connection set R ½
- 4 fastening lugs.
- Plate to be ordered separately

■ IMPLEMENTATION :

- For installation in/onto solid walls

■ CONDITIONNING :

- Packed in box

■ QUALITY - ENVIRONMENT :

ISO 9001
ISO 14001
ISO 50001
BUREAU VERITAS
Certification



DATE